



**Risk Radar® Enterprise (RRE) is an easy-to-use, web-based Risk, Issue, Opportunity Risk Register** for enterprise-wide, program, and/or project. It enables effective management and **real time** communication of project **Cost, Schedule, Technical and Performance Risk** within a common, flexible and scalable enterprise framework. RRE gives managers and their teams the real time visibility they need to proactively **Identify, Analyze, Track, Control, Mitigate, and Report Risks and Issues.**

RRE Provides Multiple Data Mining View Points Throughout the Organization.

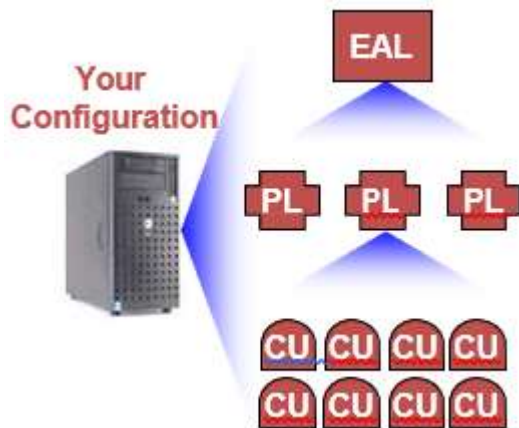
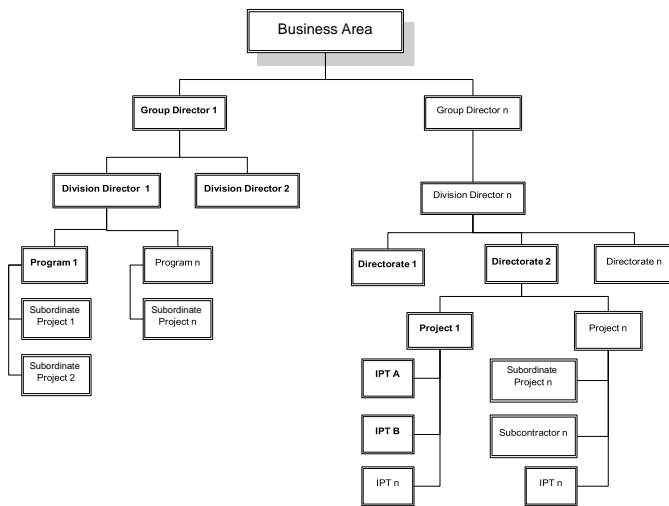


**Features that completely eliminates cumbersome spreadsheets, unreliable data and delays in time sensitive information.**

## Why Choose Risk Radar Enterprise?

- Support ISO 31000 & 9001, PMBOK, SEI CMMI, NIST 800 Series Risk Management Framework PMBOK, COSO framework,
- Adaptable to an Organization's Management and Reporting Structure
- Promotes Real-Time Visibility and Proactive Communication
- Intuitive to use- Detailed, Built-in User's Guide
- Complete Risk -Issue History Life-Cycle from Identification to Retirement
- Built to be Domain Independent
- Provides Enterprise – Project roll up view points
- User defined Enterprise and Program Specific Templates for MS Word and PowerPoint Reporting
- Executive Dashboard with real time graphical displays including Waterfall and a Plan versus Actual Charts
- Integrates with SharePoint
- High 1<sup>st</sup> Year Return on Investment
- Perpetually Licensed Application
- No external vendor installation support required

## Flexible Implementation Framework



### Enterprise Application License (EAL)

- ✓ Includes 2 free Concurrent User (CU) Licenses

### Project License (PL)

- ✓ Provides an organization, program, project, or portfolio the ability to manage risk independent of or in concert with other enterprise components
- ✓ Includes 2 free Concurrent User (CU) Licenses

### Concurrent User License (CU)

- ✓ “Float” among an unlimited number of User Accounts and Projects
- ✓ Not tied to a specific User Name or Project

## Hosting Infrastructure

### Adaptable Configurations:

-Desktop, Laptop, Server(s)

### Minimum Device Hardware:

-6 GB RAM; 2.30 GHZ or faster  
-40GB hard drive space

### Device Operating Systems:

- Windows Server, 2012 or newer, Windows 10

### Web Application Server:

-Apache Tomcat ver. 9.0, or newer

### Java Environment:

-Java 8.0 or newer

### Databases:

-MySQL 5.5, or newer  
-MS SQL Server 2012, or newer  
-Oracle 11g, or newer

### Browser(s):

Chrome, Firefox, Internet Explorer 11, Edge

## User Friendly Interfaces

